

900 SERIES

Faster, Smarter, More Efficient



900 SERIES

Signature Features

PRODUCTIVITY

- Colour Printing - 535 m² per Hour
- Black & White Printing 670 m² per Hour
- KIP ImagePro

DESIGN

- 4 Roll with 725 m² Media Capacity
- High Capacity Toner Cartridges
- Professional Edge Alignment Stacking

CONFIGURATIONS

- High Demand Dual Footprint Design
- Production or Convenience Scanning



KIP 970

KIP 980

KIP 990

Faster, Smarter, **More Efficient**

Faster The most advanced high demand wide format colour print system, delivers consistent productivity.

Smarter Brilliant multi-tasking with KIP Smart multi-function touchscreen and KIP Image Pro software, which is intelligently integrated with all KIP Accessories.

More Efficient KIP 900 Series technology lowers operating costs.





High Demand **Consistent Productivity**

Engineered to deliver:

- Superb Print Quality
- Reliable Performance
- Efficient Operation
- Remarkable Value
- Consistent Productivity
 - Single Pass Black
 - Full Colour
- Professional Edge Alignment
 - Stacker
- Enhanced Drivetrain
 - Performance
- Page Accuracy
- Expanded Media Capacity
- Permanent High Definition
 - Print Head
- Quick Switch Technology
- KIP ImagePro Print
 - Management Suite

The KIP 900 C Series systems are designed for print centres that require high demand output, precise imaging and bold, expressive colour fidelity.

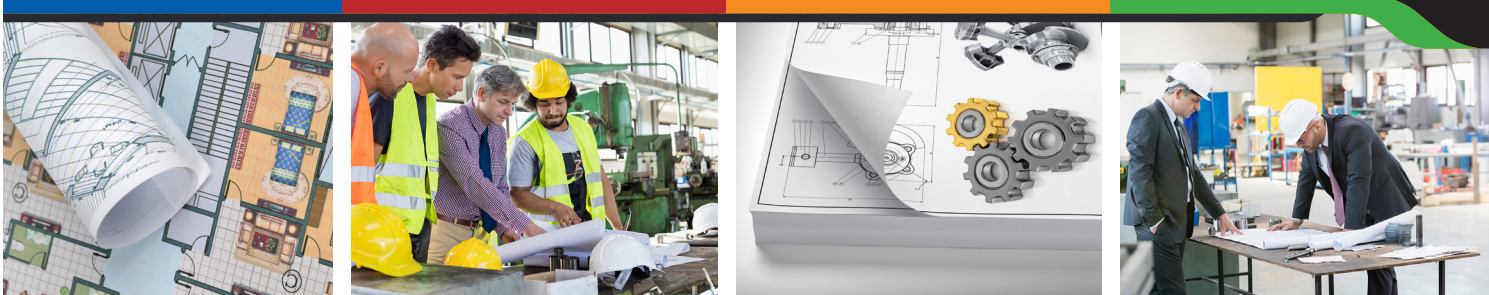
KIP 900 C Series systems produce amazingly vibrant colours, subtle tints and hues with unsurpassed colour stability from the first to final print.

All prints and copies generated by the KIP 900 C Series systems deliver the highest image durability and are fully lightfast; they will not fade or exhibit colour deterioration from exposure to light over extended periods. The CMYK dry toner system employed by the KIP 900 C Series produces 100% waterproof images that are suitable for outdoor applications, even in inclement weather.

The KIP 900 C Series systems are a comprehensive wide format solution for a range of printing tasks spanning from architectural, engineering and construction documents – to maps, posters and signs – without sacrificing quality or performance.



900 SERIES



Consistent Productivity Production Printing

The KIP 900 Colour Series print systems offer superb high quality resolution at remarkable consistent print speeds of up to 7,200 square feet or 670 m² per hour, in black & white or 5,760 square feet or 535 m² per hour, in colour.

High quality single pass black and full colour images at consistent print speed. The KIP 900 Series technology lowers operational costs. Print image is lightfast, waterproof and does not smear when using mark-up highlighters.

- Robust build quality for maximum reliability
- True Touch Productivity
- Industry Leading Software – KIP System K
Smart Printing | Data Protection | System Wide Reporting



High Demand
20 B&W | 16 Colour



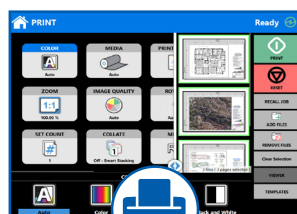
Professional Edge Alignment
Professional edge alignment stacking reduces post printing interaction.

KIP System K Software Suite



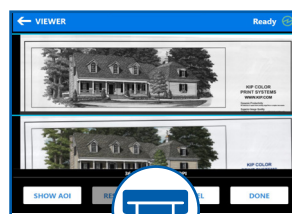
COPY

- Single Touch Copy
- Real-time Image Preview
- Recall Previous Jobs
- Simple Selection Enlargement/Reduction
- Area of Interest Editing
- Concurrent Copy and Scan



PRINT

- KIP System K Software Suite
- Advanced Browser Based Printing
- Preflight Thumbnail Viewer
- WHQL Windows Driver
- Print from Cloud Services
- Concurrent Print and Scan



SCAN

- Auto DeSkew
- Image Clean-up
- High Resolution Scanning
- Area of Interest Scanning
- Easy File Renaming
- Scan to Cloud Services



DATA SECURITY

- Image Overwrite - Data Shredding
- Removable Hard Drive
- KIP Accounting & Cost Center
- Virus Scanning
- Windows IoT - Data Encryption
- KIP Secure Print - User PIN

High Demand Colour Systems



PRINT SYSTEM



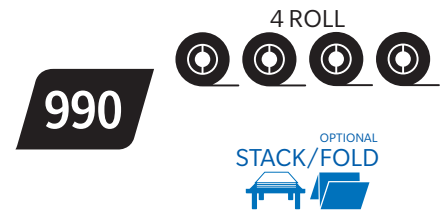
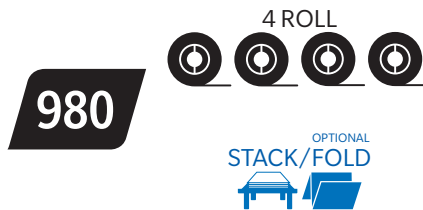
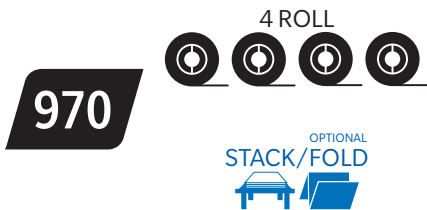
MULTIFUNCTION SYSTEM

with KIP 720 CIS convenience scanner



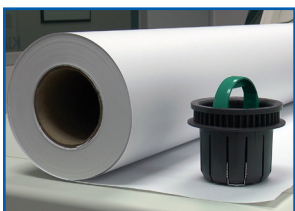
PRODUCTION SYSTEM

with KIP 2300 CCD production scanner



*All speeds represent D / A1 size prints per minute

The benefits of **Efficiency**



EXPANDED MEDIA CAPACITY

An ergonomic roll cap system simplifies the process of loading the 725 m² media capacity.



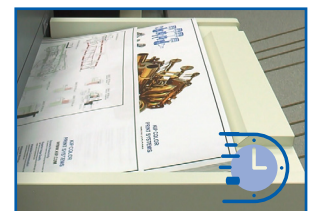
LARGE CAPACITY TONER

Each CMYK cartridge contains 1,500 gms of toner for a total capacity of 6,000 gms - allowing longer uninterrupted colour and black & white print runs for continuous system productivity.



AUTOMATIC CALIBRATION

For colour images that compliment the highest standards, an exclusive single belt imaging system performs automatic calibrations for precise imaging and bold, expressive colour output.



QUICK SWITCH TECHNOLOGY

Mixed print size sets at full production speed. The KIP 900 Colour Series print technology eliminates roll switching delays for increased productivity.

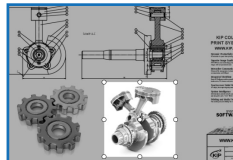
KIP System K Software

KIP System K Software Suite offers unmatched flexibility for printing projects.

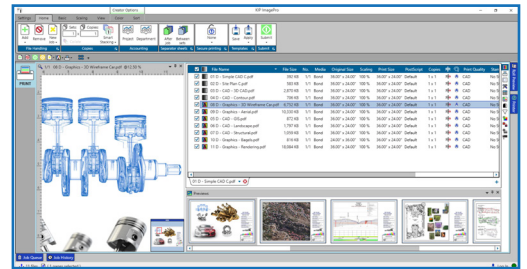


KIP ImagePro

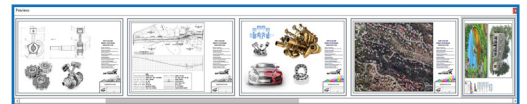
- Driverless PC App Printing
- High Definition Image Viewer with thumbnail preflight view
- Workflow Automation Templates
- Easily combine single or multi-page files from one or more file locations into a collate set
- Area of Interest for image editing
- Drag/drop and cut/paste to reorder
- Realtime access to manage print queue to maximise job priority with live printer status
- Control image scaling by percentage or single click automation to preferred page size
- Unlimited Site License — no servers or licensing required



Area of Interest (AOI)



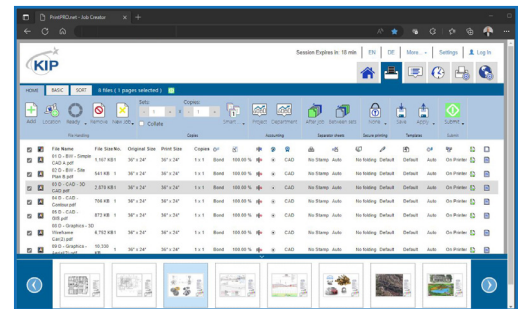
HD Viewer



Pre Flight Thumbnail Viewer

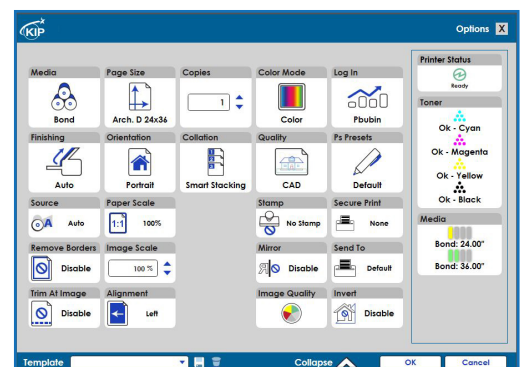
KIP PrintPro.net

- Driverless browser printing submission tool — No application or installation required
- Supports Windows, Unix, and MAC OS browsers for full control over printing parameters
- Remote printer administration and queue management
- Frees up PC, fast print job processing on KIP System K Controller
- Control image scaling by percentage or one touch automation to preferred page size
- Unlimited site license, no server or licensing required — best for small work groups



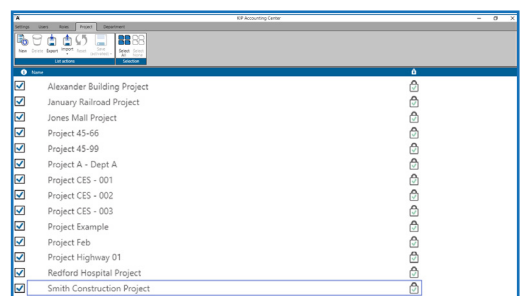
KIP Windows Driver

- Microsoft WHQL Certified
- Windows 10/11 — 32 and 64 bit operating systems
- Use from a variety of Windows based programs including Adobe, Office and CAD Applications
- Single Source Installation — No need to install multiple drivers
- Workflow Automation Templates
- Easily view and manage Job Queue and Job History with real-time printer status



KIP Accounting and Cost Center (Optional)

- Track projects and printing costs. KIP Accounting allocates print and copy volumes to departments and projects.
- Easily, print or email visually attractive reports for copy, print and scan production directly from the application.
- Enhance print system access and security
- Track Copy/Scan/Printing
- Control user features including queue management (plus many more)
- LDAP import of user information



900 SERIES SPECIFICATIONS



Scan to watch video



or visit: www.KIP.com/900

General

4 Roll Colour and Black & White Printer	Colour and black & white printer with intelligent KIP System K touchscreen
4 Roll Colour and Black & White Print/Copy/STF	Colour and black & white printer with intelligent KIP System K touchscreen for Print/Copy and STF functions
System Scanners	KIP 980: KIP 720 CIS Scanner / KIP 990: KIP 2300 CCD Scanner
Scanner Stand	KIP 720 / KIP 2300 Scanner Stand (for the KIP 980-990 or optional for stand-alone scan applications)
Stacking Systems (standard)	KIP 900 Stacker
Finishing Systems (optional)	KIPFold 2800
Description	High production colour and black & white wide format print/copy/scan
Type	LED Array Electro photography with organic photoconductor (OPC drum) Contact Development using non magnetic mono-component toner
Configurations	Printer or multi-function system (print/copy/scan)
Speed	Up to 7,200 sq. ft (670 m ²) in single pass black or 5,760 sq. ft. (535 m ²) per hour in colour regardless of image type or print resolution
Print Production	20 D/A1 size prints per minute in black & white, 16 D/A1 size prints per minute in colour
Warm Up Time	Instant from standby, less than 4 minutes from power on
Toner	Four colour (CMYK), dry toner, print images are UV resistant and waterproof
Input Power	North America: 2x 208-240VAC +6%/-10% 50/60Hz, 16 A EU/UK: 2x 220-240 V, 50/60 Hz, 16 A
Power Consumption	Printing 2.4 kWh (Average), Ready 630 W (Average), Sleep Mode 3.4 W
Acoustic Noise	< 65 db (printing), < 60 db (standby) (ISO 7779)
Ozone	< 0.05 ppm (average of 8 hours)
Dimensions	KIP 970 60" x 43" x 48" / 1500 x 1080 x 1220 mm (W x D x H) KIP 980 78" x 43" x 48" / 1970 x 1080 x 1220 mm (W x D x H) KIP 990 78" x 43" x 48" / 1970 x 1080 x 1220 mm (W x D x H)
Weight	1,212 lbs / 550 kgs NOTE: Weight of the optional scanner or stacker is not included

Printer

Print Resolution	600 x 1,800 dpi
Paper Capacity	7,800 sq ft / 724 sq m (4 rolls + cut sheet)
Output Sizes Width (roll media)	11" - 36" / 297 mm - 914 mm (3" Core)
Output Sizes Length (roll media)	8.5" / 210 mm minimum, 210' / 64 m maximum (actual length may be dependent on media type and file type limitations)
Paper Weight (roll media)	See KIP Media Guide
Sheet Bypass	Up to 40 lbs. / 150 gsm bond Maximum sheet size 36" / 914 mm x manageable length Minimum sheet size 11" x 17" / A3
Media Types	See KIP Media Guide

Controller

Controller Type	System K Embedded, Microsoft® IoT Enterprise
Memory	16 GB (min)
Solid State Drive	Minimum 256 GB (Upgradable)
Supported File Type	PDF, PDF-A, HPGL 1/2, HP-RTL, CALS Group 4, TIFF Group 4, CIT/TG4, Grayscale TIFF, TIFF Packbits, PNG, JPEG

Scanner

Scanner Type	KIP 720 CIS External (dual footprint): KIP 980 KIP 2300 CCD External (dual footprint): KIP 990
Scan Resolution	600 dpi
Scan Format	PDF, PDF-A, Multipage PDF, TIFF, Multipage TIFF, JPEG
Scan Destination	Local USB (removable media), Mailboxes (local), SMB, FTP, Cloud, Email
Original Size Width	11" - 36" / 210 mm to 914 mm
Original Thickness	0.05 mm - 1.60 mm (image quality over 0.25 mm thick cannot be guaranteed) Note: For KIP 990 refer to KIP 2300 Scanner Specifications

Space, Electrical & Environmental Requirements

Total Space (minimum)	132" x 182" / 3350 mm x 4610 mm (W x D) (KIP 900 Series with stacker) The flexibility of the KIP 980 / 990 system permits the scanner to be placed perpendicular or parallel to the KIP printer for individual workflows which can result in special requirements that may differ than noted above.
Electrical Requirements	KIP 970 = Dual 208 V - 240 V 50/60 Hz, 16 A KIP 980 / 990 = North America - the above, plus one 110 V - 120 V 50/60 Hz, 6 A or higher (for KIP scanner) EU & UK - three 220V - 240V 50/60 Hz 16A (for printer and scanner)
Electrical Receptacle	North America = two NEMA 6-20 R (plus one NEMA 5-20 R for the KIP 980 / 990) Europe = CEE 7 (x3 for KIP 980 / 990) UK = BS 546 (x3 for KIP 980 / 990) All other regions = please refer to your local standards
Network Port	RJ-45 port-CAT5 or higher. LAN rated at least at 100 mb. Recommended is 1000 mb
Room Temperature	50-86°F / 10-30°C
Humidity	15-80% RH
Site Survey	KIP 900 Series site survey documentation is to be completed prior to system installation
Min. Door Width	32" / 813 mm