



SYSTEM
SOFTWARE



2.4



Print Management Solutions

SYSTEM SOFTWARE **K**

KIP System K Software Suite provides an enhanced user experience and exceptional productivity for the seamless control of colour and b&w print demands. Features include:

- Touchscreen tablet navigation.
- Standardised system icons with tile interface.
- Print submission applications with systems management, configuration and systems status.
- Software applications feature ribbon command bar with extended choice of functions.
- SNMP protocols, cost center control and cloud collaboration.
- System K Windows® Driver, WHQL certified, touch PC compliant with simplified / advanced functions and systems status.

KIP System K Software Suite is uniformly integrated with KIP 900 Series, KIP 800 Colour Series, and KIP 70 Series.



A new generation of wide format functionality

Table of Contents Print Management Solutions

- KIP Systems Diagram.....4

- Multi-Touch Touchscreen**
- KIP Multi-Touch Solutions.....6
- KIP Cloud Connect8

- Print Submission**
- KIP ImagePro - Print.....10
- KIP PrintPro.net.....12
- KIP Smart Print & Scan14

- Print Drivers**
- KIP Windows® Driver16
- KIP AutoCAD® Driver18

- Accounting / Administrative**
- KIP Accounting Center.....20
- KIP Cost Center.....22
- KIP Role Based Access Control24
- KIP Card Reader Systems.....26
- KIP Printer Status / SNMP.....28
- KIP Data Security Features30

- KIP 720 / KIP 2300 Stand Alone Scan Station**
- KIP ImagePro – Scan & Copy32

- Print Management Solutions**
- KIP Custom Media Manager.....34

KIP 70 Series



KIP 70 and KIP Colour Series Multi-touch Solutions

- Copy & Scan to Local/USB/LAN/Cloud (MFP)
- Print from Local/USB/LAN/Cloud
- Super View with Area of Interest
- Cloud Connect
- Data Security
- Smart Scan
- KIPFold Control

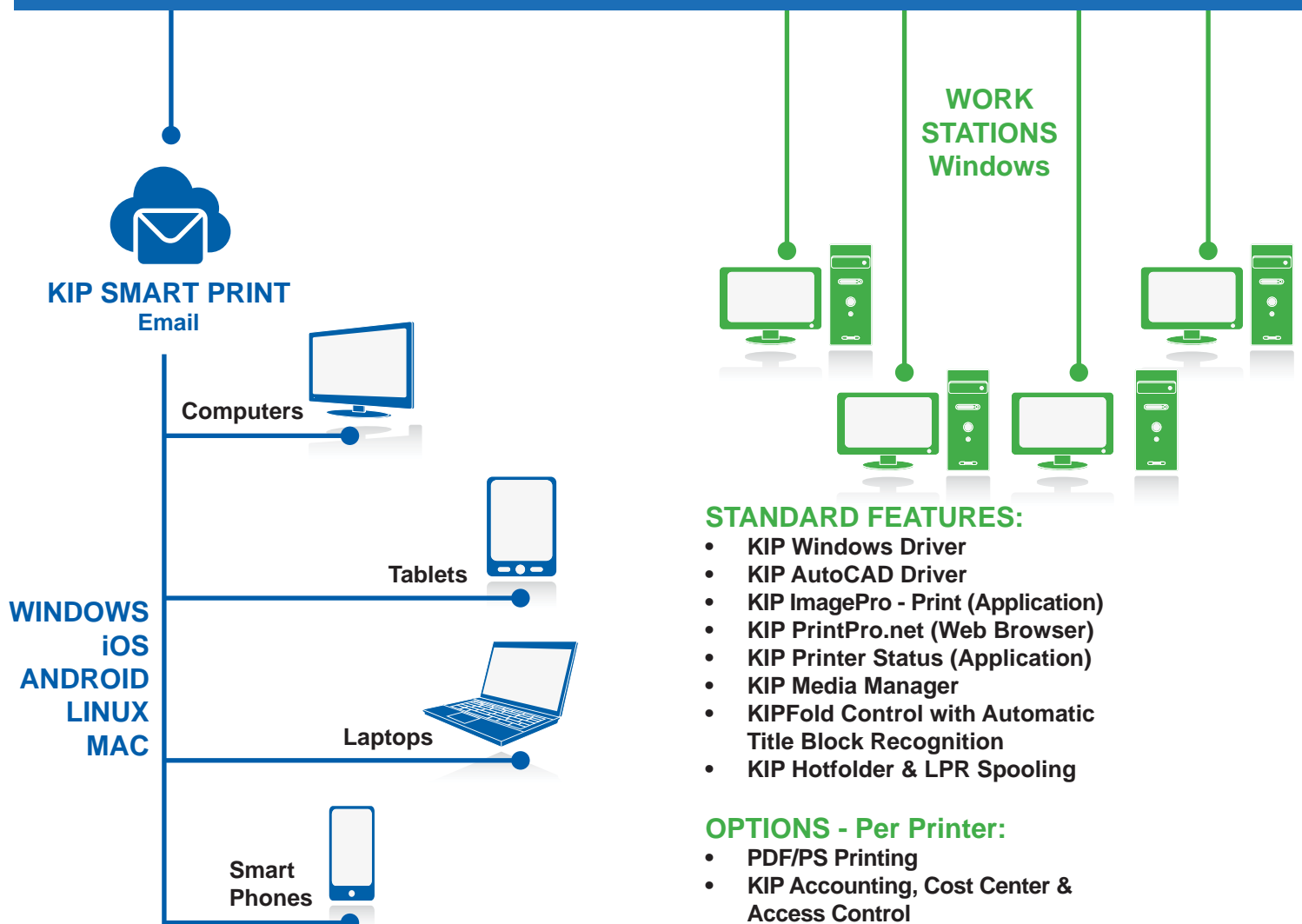
OPTIONS:

- Removable HD
- Card Reader

MFP

Printer

NETWORK



STANDARD FEATURES:

- KIP Windows Driver
- KIP AutoCAD Driver
- KIP ImagePro - Print (Application)
- KIP PrintPro.net (Web Browser)
- KIP Printer Status (Application)
- KIP Media Manager
- KIPFold Control with Automatic Title Block Recognition
- KIP Hotfolder & LPR Spooling

OPTIONS - Per Printer:

- PDF/PS Printing
- KIP Accounting, Cost Center & Access Control

KIP Colour Series



**MFP
Printer**



**MFP
Printer**

KIP Scan Systems Scan, Copy & Print

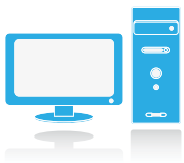


KIP ImagePro - Scan & Copy:

- Scan - Local/USB/LAN/Cloud
- Copy - To KIP Colour or B&W printer
- Print - To KIP Colour or B&W printer
- Colour Adjustment / Management
- High Definition Viewer
- Area of Interest
- KIPFold Control

WORK STATIONS

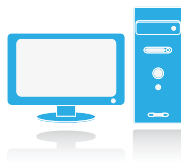
MAC



STANDARD FEATURES:

- KIP PrintPro.Net (Web Browser)
- PostScript Printer Description File
- KIP Hotfolder Support
- LPR Spooling

LINUX



STANDARD FEATURES:

- KIP PrintPro.Net (Web Browser)
- KIP Hotfolder Support
- LPR Spooling

KIP DIGITAL DATA SECURITY



STANDARD FEATURES:

- Image Overwrite
- Removable Hard Disk Drive Accessory Kit
- Standard Security Updates
- KIP Secure Print
- KIP Accounting Center Integration

Comprehensive KIP System K features are available in the following brochures:

- KIP Multi-touch Solutions
- KIP PC & Web Print Solutions
- KIP Admin, Accounting & Access Control

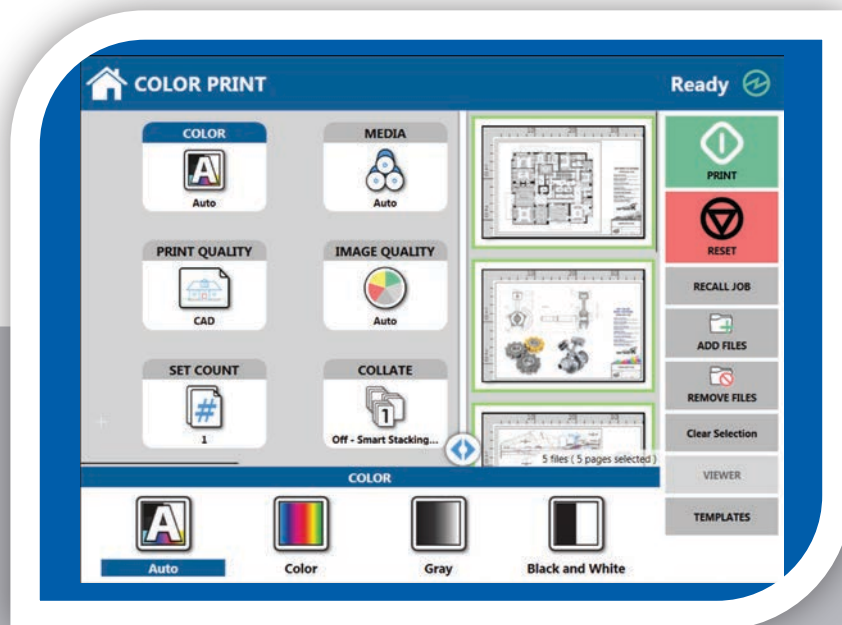


Multi-Touch Touchscreen

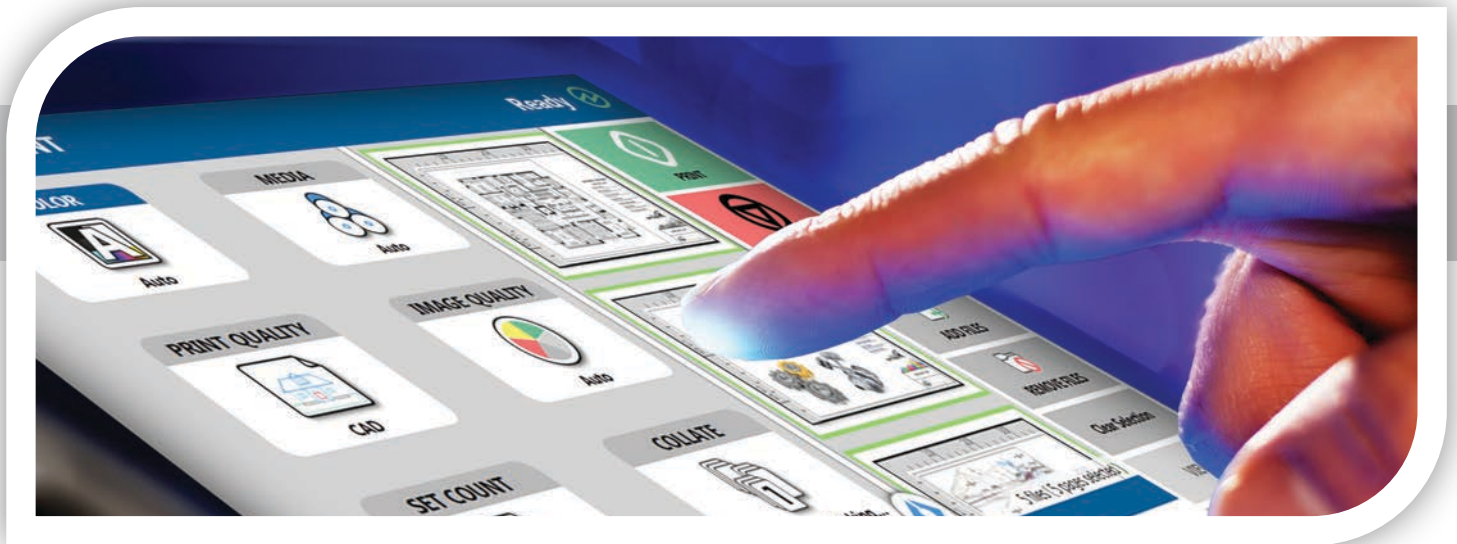
KIP Multi-Touch Solutions

All system functions for KIP systems are performed through an integrated, 12" multi-touch tablet-like colour display to copy, print and scan both colour and b&w documents. Walk-up operator conveniences include auto-start, access to unlimited presets, easy to understand touchscreen user guides and real-time on-screen previews. Multi-touch controls provide users with full colour intuitive tablet-like controls with swipe, pinch, spread, rotate and tap.

Vivid image previews and on-screen controls allow for saving and printing the Area of Interest. Multi-touch features allow operators to identify documents, adjust image quality and replace documents in collated sets. The integrated colour touch display provides a powerful combination of control plus convenience; you don't have to leave the printer to perform important tasks.



Zoom, Rotate, and Pan the Image Preview Using Multi-Touch Controls



Walk-Up Print, Copy and Scan

KIP Multi-Touch Touchscreen Features



Vivid 12" Colour Multi-Touch Display | Intuitive Feature Selection for Easy Operation | Fully Articulating Viewing Angle | Centralised Access to all System Features | Print, Copy and Scan in B&W and Full Colour | Super View with Swipe, Pinch, Spread and Rotate | Print Directly from Removable Media, the Cloud and Local Mailboxes | One Touch Access to System Features in 22 Languages | Full Colour Guides | Integrated Print Previews | On-screen Set Copy Editor | Concurrent Print and Scan-to-File | Manage Print and History Queue | KIP Accounting Center Integration | KIP Cost Center Integration



Multi-Touch Features

Super View Image Controls for Print, Copy and Scan | Pinch and Spread to Zoom | Touch to Rotate | Copy, Scan, Email or Print Specific Area of Interest | Selectable User Guides | Automatic Display of User Guide when Replacing Toner/Paper | View Job Queue | Reprint Jobs from History | Selectable System Presets | View System Status from any Screen | Select Colour Scheme



Copy Functions

Concurrent Copy and Print | Copy Single or Collated Sets | Sort and Replace Pages in Collated Set | Copy Area of Interest | Scan to File while Copying | Scale to Factor or Select Page Size Preset | Select Fold Pattern or Auto-Fold Based on Page Size | Automatic Deskew | Stamp Documents with Text or Graphic | Interrupt Jobs for Urgent Tasks | Unlimited System Presets for Stamps and Folding | Unlimited User Templates for Document Types and Job Settings | Select Front or Rear Stacking | Copy Details for KIP Job Accounting and Data Tracking | Colour Copy To KIP Colour Series Systems



Print Functions

Print from Local Mailbox/USB/Network Drive | Print from KIP Cloud Connect | WYSIWYP File Preview | Collated Set Printing | Select Fold Pattern or Auto-Fold Based on Page Size | Scale to Factor or Select Page Size Preset | Auto-Print from Email | Print Details for KIP Job Accounting and Data Tracking | Colour Print to KIP Colour Series Systems



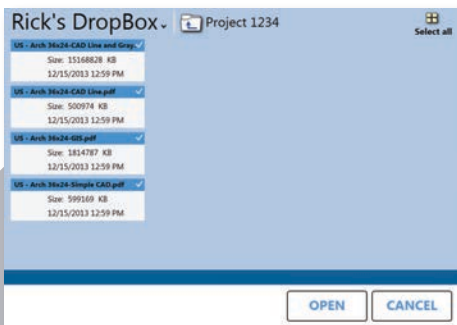
Scan Functions

Scan to File in B&W or Colour | Scan to Local Mailbox/USB/Network Drive/SMB/FTP | Scan to KIP Cloud Connect | Scan to Email | WYSIWYP File Preview | Scan to Multi-Page TIF, PDF or PDF-A | Scan to B/W TIF, Cals Group 4, PDF or PDF-A | Scan to Colour TIF, JPEG, PDF or PDF-A | Select 200 – 600 dpi | Select Rotation | Adjust Scanner Speed for Delicate Originals | Scan Details for KIP Job Accounting and Data Tracking

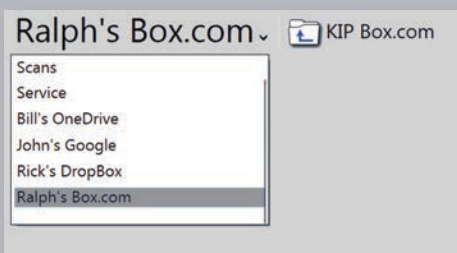
Multi-Touch Touchscreen

KIP Cloud Connect

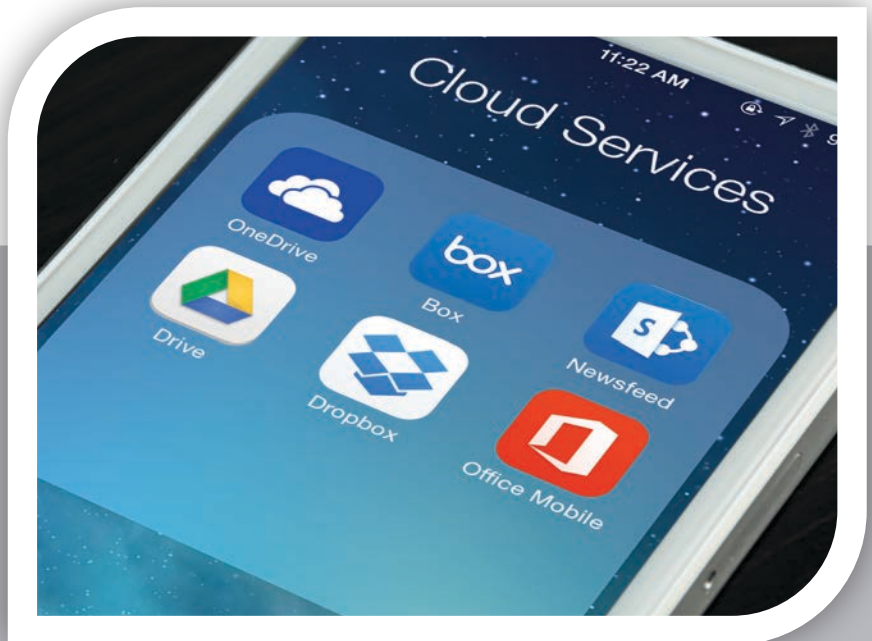
Sharing online content via popular Cloud Services has become a critical collaboration tool. Increased network security and file size restrictions limit the ability of users to Email full size colour and b&w technical documents. KIP systems include KIP Cloud Connect – the ability to scan to and print from the cloud directly at the multi-touch display. Whether the Cloud Service is used for personal documents or for project collaboration, KIP systems provide quick access to print colour or b&w data. Scan a document to the cloud at the touchscreen and instantly access it at your desktop or mobile device.

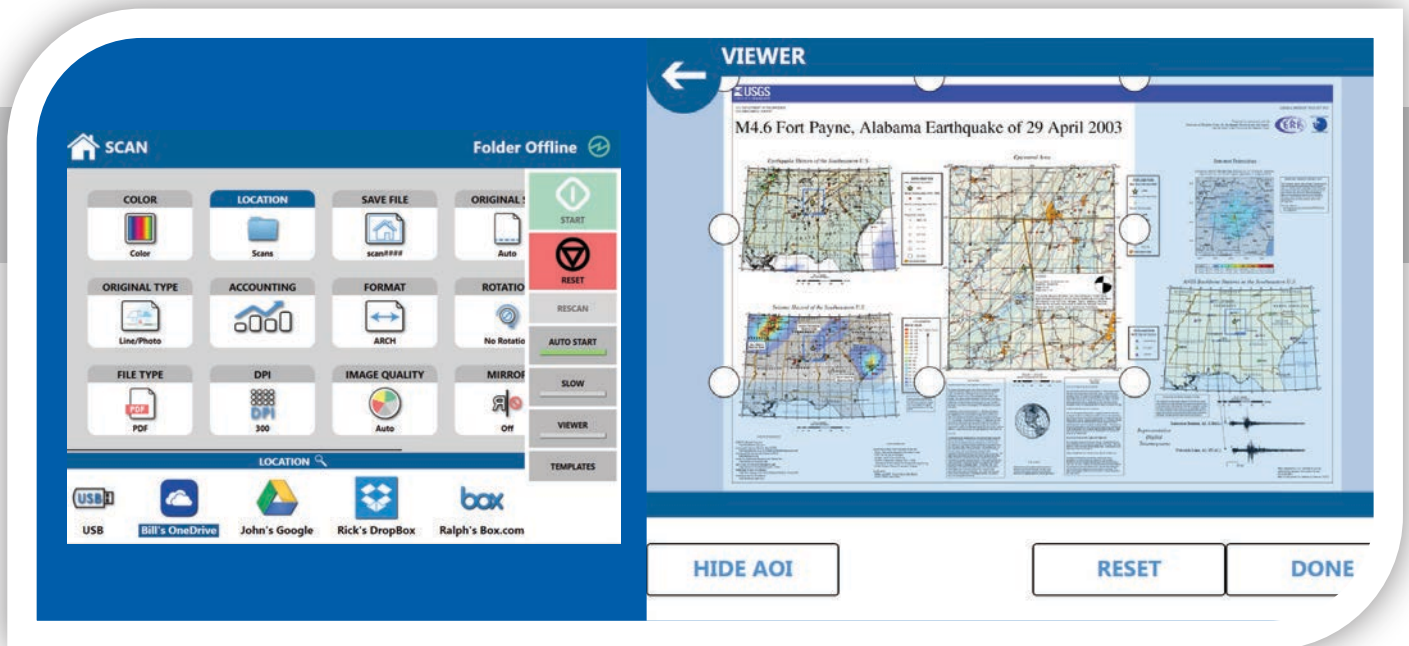


File to Print



Multiple Cloud Locations





Scan to Cloud

Area of Interest to Cloud

KIP Cloud Connect Key Features



Select from Multiple Cloud Services | Print from KIP Cloud Connect | Scan to KIP Cloud Connect | Unlimited Cloud Connections | Single or Multiple Files | Choose Files from Multiple Cloud Services for Single Print Job | Easy Configuration from Multi-Touch Screen | Collated Sets Printing



Cloud Service Choices

Microsoft® OneDrive | Microsoft® Office SharePoint | Google Drive | Box.com | Dropbox



Multi-Touch Print from Cloud

Print to B&W KIP Printers | Print to KIP Colour Printers | Print Area of Interest | Build Collated Sets from Multiple Cloud Services



Multi-Touch Scan to Cloud

Scan to Individual Cloud Location | Scan to Project Cloud Location | Scan Single or Multi-Page Files to Cloud | Scan Colour or B&W Documents | Scan Area of Interest



Image Preview

Multi-Touch Controls: Zoom, Rotate and Pan | Zoom to Area of Interest



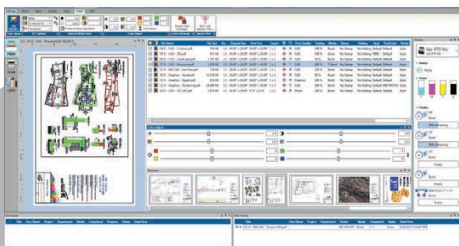
Print Submission

KIP ImagePro - Print

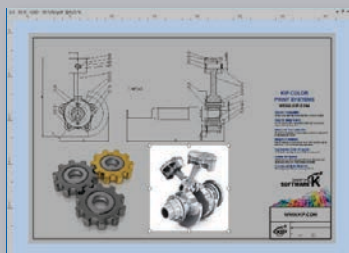
KIP ImagePro is a powerful suite of software that improves efficiency with controlled workflow automation in high demand environments while producing faster turn-around times. KIP ImagePro document submission tools are designed to enhance colour management capabilities. Advance your workflows in an application for printing a range of colour or black and white wide format documents including technical images, posters and banners to multiple KIP systems.

The brilliant multi-tasking flexibility allows production operators to capture efficiency, improving customer service with faster production fulfillment. A fully customisable interface enhances system tools by placing them forward for ease of access, navigation and control. It is not necessary to be a colour expert to adjust and print colour with KIP ImagePro. Simple presets for both graphic and technical documents provide easy operation for smarter colour communication. Sophisticated project details can be highlighted with Advanced Area of Interest selections. KIP Smart Stacking simplifies the accurate collation of mixed sets of colour and black and whites prints. Intelligent Job Validation provides notification for missing fonts, correct page size and comprehensive multi-page control when printing PDF files. The Roll Preview interactively displays documents on the chosen roll width for nesting, paneling & two-up printing.

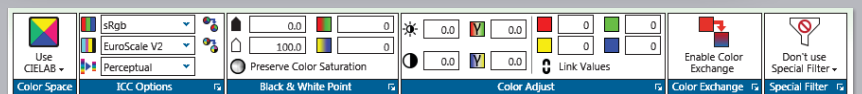
KIP Image Pro - Print has two interface modes: Standard, for features most commonly used and Expanded, additional tools designed for production experts. Using either mode, the ease to which KIP ImagePro integrates into print workflows is simply brilliant.



Powerful Job Creation, HD Viewer & System Monitoring



Area of Interest (AOI)



Professional Colour Management

KIP ImagePro - Print Key Features



Brilliant Multi-Tasking | KIP Smart Stacking | Advanced Area of Interest Printing | Intelligent PDF Job Validation | High Definition Viewing | Customisable Interface for Personalised View & Tools | Easy Deployment

KIP ImagePro: Features



Brilliant Multi-Tasking Within the productive simplicity of one application - create multiple jobs | Adjust Colours | Review Changes | View Device Status | Colour*, B&W and Grayscale Printing | Automatic Colour**, Gray or B&W File Detection | Load and Save System Presets | KIP Secure Print | KIP Accounting Center Integration | KIP Cost Center Integration | KIP Smart Stacking

High Definition Viewing High resolution image pre-flight viewer for “What You See Is What You Print” to include review of colour adjustments and preset creations | Colour or B&W | View applied filters to include colour adjustments, stamps, PS & GL settings | AOI Selection - Scale, Position, Print | Position Image on Page | Page ruler | View Scale to Pixels or Fit to Screen | Image Navigator



Advanced Area of Interest Printing Select Size | Position | Print only the “Area of Interest” to enhance communication of sophisticated or important job details



Customisable Interface Access your preferred productivity features with ease using “Pop Out” tools and panels, regardless of Standard or Expanded mode.



Job Matrix Individual Set and Copy Count | Change File Order with Cut/Paste | Apply Presets to Selected Files or Entire Job | Advanced Multi-Page PDF Support | Drag-n-Drop Files or Folders from Cloud, Local, Network Drives and KIP Mailboxes | Banner Page for Set or Job | Select Print Stacking Location | Submit Job Paused for Hold & Release | KIP Secure Print with PIN or User Identification | Accounting selections to include Projects and Departments | Stamping | Print Quality Presets for Colour, Grayscale and B&W Documents | Page Count | Page Size | Scale to Page | Scale to Page Width or Length | Scale to Maximum | Margin Controls | PDF and Postscript® Quality Preset | Fold Preset | Text and Graphic Stamp in Colour or B&W | HPGL Pen Preset | Rotate/Mirror/Invert | Adjust Job Matrix Column Sizes and Position | Customise Matrix Columns for Content



Preflight & Thumbnail Preview Vertical or Horizontal Ribbon Style for Quick Preview | Preview in Colour or B&W | Preview Orientation & Print Direction | Select Image for instant access in Matrix | Roll Preview | Preflight Nesting & Two-Up



Folding Automatic Title Block Detection | Automatic Fold Configuration | Customise Fold Presets



Email Notifications Enable - Job Notifications | Replenishment of Consumables | Receive Printer Status | Meter Notifications



System Presets & Media Manager Pre Defined & Fully Customisable | Preview Preset | PS & PDF Settings | HPGL Variables | Advanced Scaling | Stamps with Images & Text | Custom Page Sizes | Load Custom Media Profiles | Add new media and customise names



Other Features Auto Connect to KIP Printers | Auto Update using “Click Once” | Customise User Interface with “Pop Out” Tools and Panels | Auto-Hide, Float or Dock Panels | Enable PS/PDF, HPGL Pens, Print Quality Presets | View changes as they occur | Add Custom Page Sizes | Unlimited User Templates | Displayed Units in Inch or Metric | Multiple Languages

KIP ImagePro: Expanded Features



Job Matrix Select Colour Space | ICC Options | Black / White Point | Colour Adjustments | Colour Exchange | Sharpen & Smooth Tools | Nesting with 2-UP | Paneling | Technical Label

Job Validation Notification for - Missing PDF fonts | Correct Page Size | Missing Media Sizes | Missing Job Media Type | Comprehensive Multi-page Individual File Selection & Control



Job Information Job analysis for page size counts, colour to B&W along with projected print times.

Job Monitoring and Device Status View Job Processing | Printing Status | Manage the Job to include Pause, Reorder or Delete | Recall, Edit and Reprint Previous Jobs

*with KIP Colour Printers **with KIP Colour Printers, configured for this function



Print Submission

KIP PrintPro.net

KIP PrintPro.net provides KIP colour and b&w systems with the most feature rich browser based print submission and system management application on the market.

Print Submission - Without the need to install any application software, operators can perform print submission, access their KIP printer mailbox and manage their print jobs. Using a web browser, operators can configure single and multi-page files with individual scaling preferences, stamps, folding presets, colour management controls and print stacking location. Start new print jobs quickly by accessing User Presets that include operator preferences, job settings and the most common system presets. PrintPro.net supports building print jobs using colour and b&w technical documents from standard wide format digital files including Postscript, PDF, TIFF, JPG, Calcomp, DWF and HPGL 1/2/RTL (and more).

System Management - Based on defined user access, administrators can use virtually any web browser to continue the print queue and see a full overview of the system operation. Administrators have complete access to printer preferences, network connectivity settings, system presets, daily sleep timers, history queue size, exit tray defaults and auto-rotation settings.

Feeder

1
36" (Bond)
75%

2
24" (Bond)
50%

Counters

Meter A	8823 1 Sq. Feet
Meter B	0
Total Run	1033 1 Linear Meters
B&W Scan	No Content
Color Scan	No Content
Scan Count	No Content

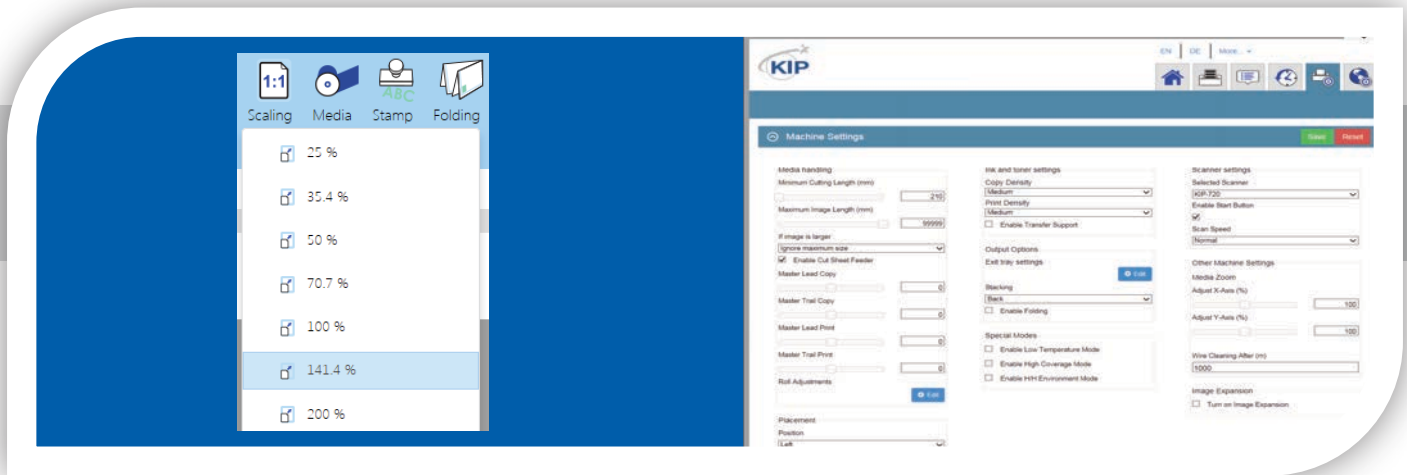
Notifications

Printing, Loading
In Process: none
In Queue: 0

File Name	Name	No.	Print Size	Copies
C:\Pr...36x24-CAD Line and Grayscale.tif	Page 1	1	914 mm x 610 mm	1 x 1
C:\Pr...002\US - Arch 36x24-CAD Line.pdf	Page 1	1	914 mm x 610 mm	1 x 1
C:\Pr...2\US - Arch 36x24-Simple CAD.pdf	Page 1	1	914 mm x 610 mm	1 x 1
C:\Pr...e5763002\US - Arch 36x24-GIS.pdf	Page 1	1	914 mm x 610 mm	1 x 1

KIP PrintPro.net Job Submission

KIP PrintPro.net Settings & Status



KIP PrintPro.net Scaling

Web-Based, Browser Independent

KIP PrintPro.net Key Features



Identical Features Across a Variety of Web Browsers | Multiple Copies or Collated Sets | WYSIWYP Image Preview | Individual File Settings for Job Matrix Templates | Multi-Page Support | Colour Adjustments and Filter Selections | Email Notification | Document Folding and Stamping | HPGL Pen Preset Selection | Transfer Files from KIP Printer Mailbox | Customise System and Folder Presets | Manage Print Queue and User Settings | KIP Secure Print | KIP Accounting Center Integration | KIP Cost Center Integration



Web Browser Features

Supports Popular Browsers | Identical Features Regardless of Browser | New Features Available Instantly After System Updates | Use Mobile Phones and Tablets to Manage Settings and Print Queue



Job Build Matrix

Matrix Printing with Individual Set and Copy Count | Change File Order with Cut/Paste or Drag-n-Drop | Apply System Presets to Selected Files or Entire Job | Multi-Page PDF Support | Select Files or Folders from Cloud, Local, Network Drives and KIP Mailboxes | Banner Page for Set or Job | Submit Job Paused for Hold and Release | KIP Secure Print with PIN or User Identification



Individual File Settings

Print Quality Presets for Colour, Grayscale and B&W Documents | Copy Count, Scaling and Page Size | PDF and Postscript® Quality Preset | Fold Preset | Simple and Advanced Colour Management Preset Including ICC Profiles | Manage Image Quality with B&W Point, Background Removal and Sharpening Tools | Select Print Stacking Location | Text and Graphic Stamp in Colour or B&W | HPGL Pen Preset | Rotate/Mirror/Invert | Save Unlimited User Templates (All Features Listed Above)



Image Preview

Preview in Colour or B&W | Fast Thumbnail Preview | WYSIWYP Large Image Preview | Rotate Image for Best Fit | Preview Print Direction



E-Notifications

Email Notifications for: Job Received | Job Complete | Replenish Toner or Paper | Automated Meter Reads



Document Folding

Automatic Title Block Detection | Automatic Fold by Page Size | Customise Fold Presets



Job Monitoring and Device Status

Dependable Device Feedback | View Processing and Printing Status | Manage the Job to Pause, Reorder or Delete | Recall, Edit and Reprint Previous Jobs

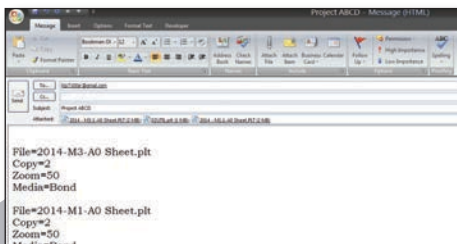


Print Submission

KIP Smart Print & Scan

KIP Smart Print & Smart Scan are flexible approaches to delivering print and scan services – one that responds to mobile business needs by providing a driverless cloud solution. Whether you're using iPhone, Android, Windows, PC, Mac or laptop; KIP Smart Print simplifies convenience printing using your favorite Email provider. Scan to Email an entire document or just a small area using KIP Smart Scan.

Configure any KIP system to receive Emails and their attachments at predetermined intervals. The attached documents are printed using keywords for copy count, scaling and KIP Secure PIN. Alternatively, archive the documents and access them from the multi-touch screen, KIP ImagePro or PrintPro.net. KIP Smart Scan & Smart Print let operators make a "copy" from one KIP to another anywhere in the world with only an Email address.



Optional Keywords for Expanded Flexibility



Easy to Use Email Printing



Use any Phone, Tablet, Laptop or PC



KIP Smart Print & Scan Key Features



Use any Smart Phone, Tablet, Laptop or PC | No Need to Install Drivers or Software Applications | Submit Print Ready Files via Email Attachments | Works with any Web Enabled KIP Printer | Print B&W or Colour Documents | Scan Full Size Documents | Choose an Area of Interest | Remote Scan Auto-Archived or Printed by KIP Printer | Access Archived Documents via KIP Apps | Optional Keywords Provide Expanded Flexibility



KIP Smart Print

Works with any Web Enabled KIP Print System | Print Colour or B&W Documents | Secure PIN From Smart Print via Email | SSL for Encrypted Connection | POP3 Or IMAP Mail Compatible | Configurable Email Monitor | Archive or Print Incoming Email | Attach Multiple Files To Create Sets | Keywords for Filename, Copy Count, Media Type, Scaling, KIP Secure PIN



KIP Smart Scan

Works with any Web Enabled KIP Print System | Scan to Email In Colour or B&W | Scan Area of Interest to Email | Cloud Scan to Remote KIP Systems via Web | Remote Scan Auto-Printed | Remote Scan Auto-Archived

Print Drivers

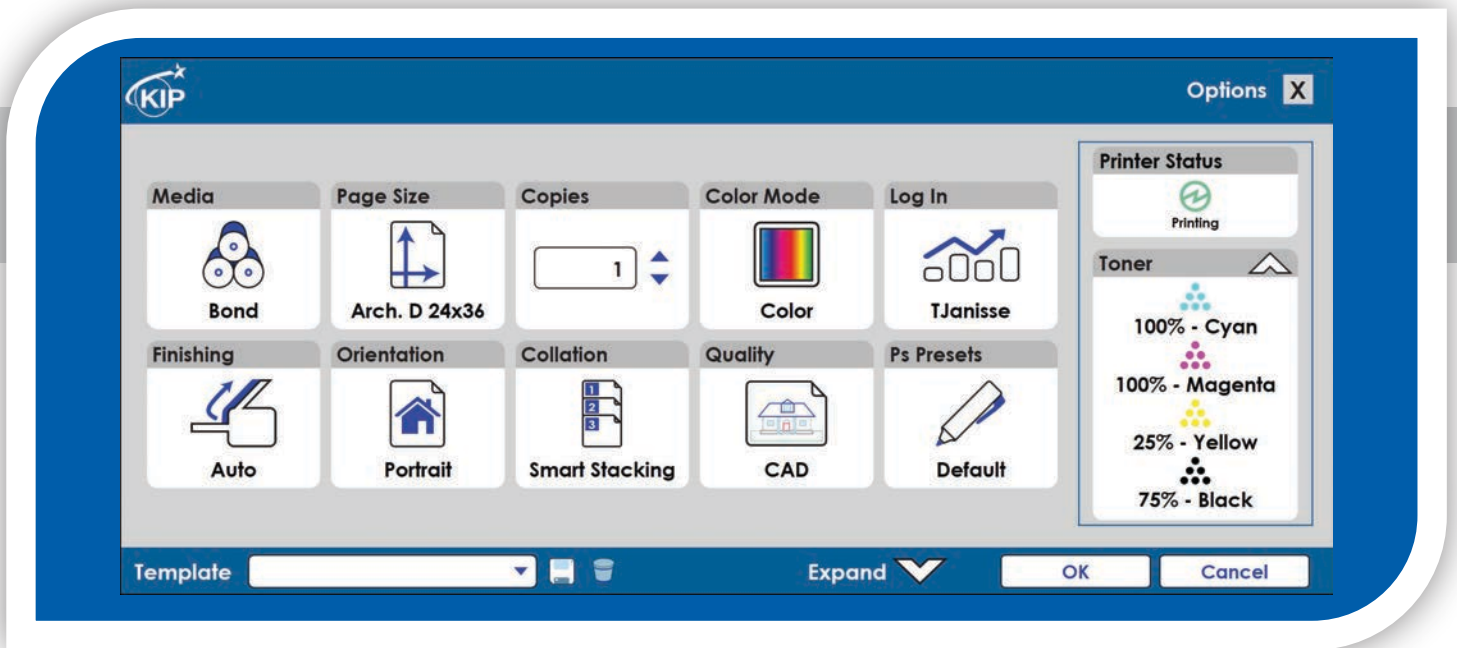
KIP Windows® Driver

The KIP Windows® Driver Pro is Microsoft® WHQL certified, meeting exact standards of reliability and quality. The functional and intuitive graphic user interface and expanded features provides the user with a wide range of standard and special functions when printing from Windows® based applications.

The KIP Windows® Driver Pro can be used with the entire range of KIP Printers from any Windows® based application for both colour and b&w print applications.



Windows® Driver Expanded View



Windows® Driver Collapsed View

KIP Windows® Driver Key Features



Fast Spooling for Multiple Copies or Sets | Displays Real-Time System Status | Information Set Collation | Provides Current Media Information | Media Selection | Secure PIN Printing | Send Job on Hold | Save Templates | Brightness Adjustment | Unlimited Image Quality Presets | Pen Preset Selection | KIP Accounting Center Integration | KIP Cost Center Integration



Driver Information

Single Source Driver for 64 and 32 Bit Operating System Compatibility | KIP GL Format | KIP Script Format Windows® 8, Windows® 10 & Windows® 11



Media Information

Paper Size (Standard and Custom Sizes) | Standard Media Types | Custom Media Types | Orientation | Media Source



Print and Output

Scaling (When Not Available In Application) | Paper Scaling | Collation/Page Order | Mirroring | Inverting



Colour Selections

Simple Colour Preset Selection | Simple Colour Adjustments | Advance Colour Quality Selection | Advance Colour Filter Selection | Advance Colour, Black Trapping On/Off | Advance Colour, Colour Trapping On/Off



Special Features

Apply Stamps | Set Separator | Job Separator | Folding Control (when folder is present) | Trim at Image | Alignment



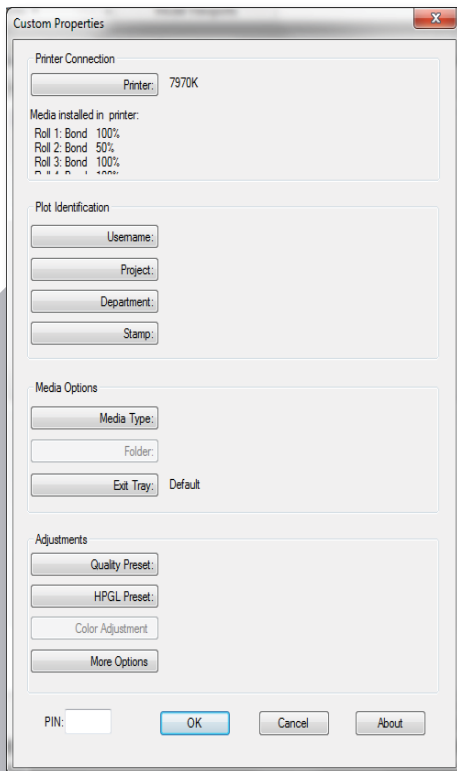
KIP Accounting

KIP Cost Center Integration | KIP Accounting Center Application

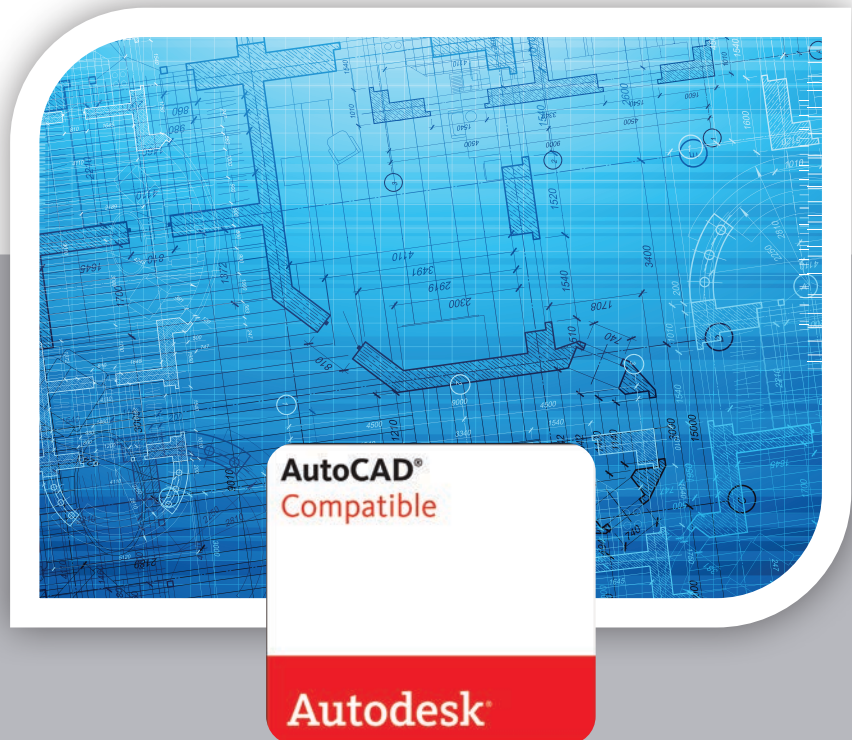
Print Drivers

KIP AutoCAD® Driver

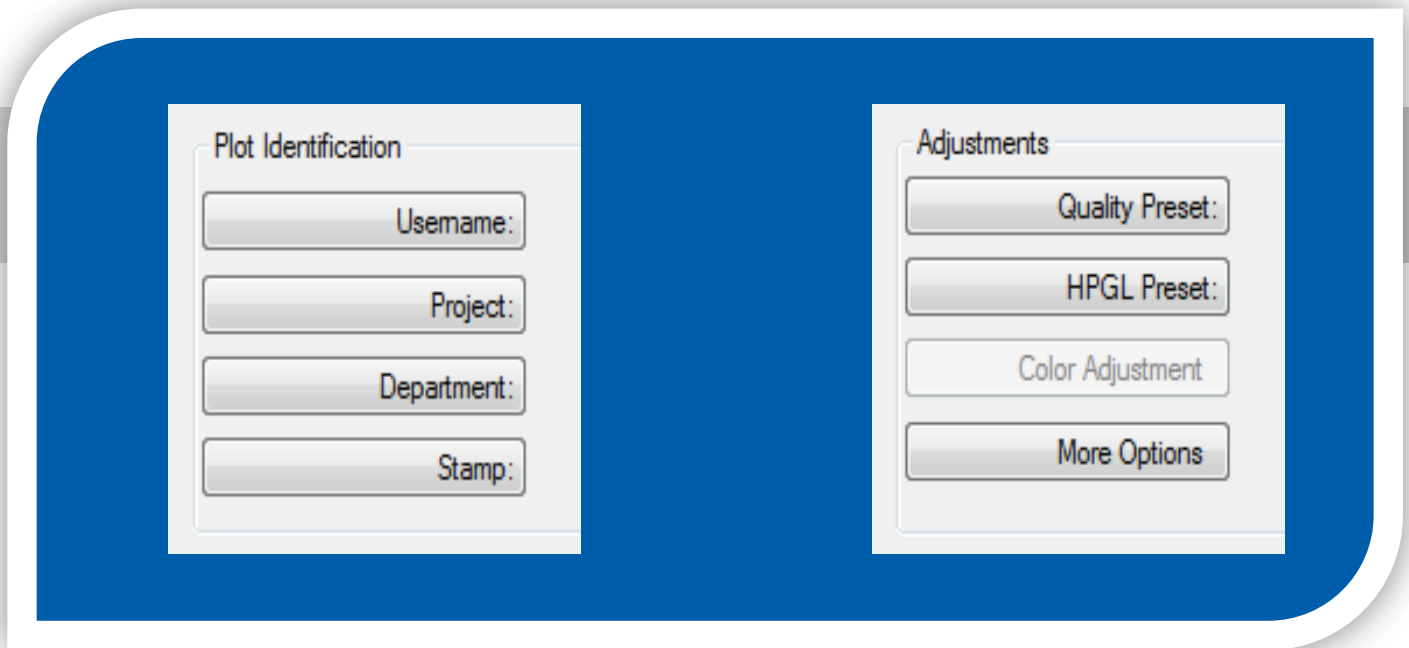
The KIP certified AutoCAD® Driver provides integrated printing from within Autodesk® software applications such as AutoCAD®, AutoCAD® LT and DWG TrueView. The fully compatible, dedicated KIP HDI Driver uses the Autodesk® backbone to streamline printing of AutoCAD® files. KIP's AutoCAD® Driver includes unique data tracking by username and two customisable fields. Two-way printer status allows users to review roll and media information. Long length documents are easily generated by the KIP HDI Driver and the HPGL/2 data is transmitted to KIP's System K controller for quick processing and printing.



AutoCAD® Driver Custom Properties



Fully Compatible with AutoCAD® 2013 and Newer



AutoCAD® Driver Plot Identification

AutoCAD® Driver Adjustments

KIP AutoCAD® Driver Key Features



Fully Compatible with Current Versions of AutoCAD® | True HDI AutoCAD® Driver | 32 and 64 Bit Operating System Compatibility | Real-Time Media Status | Custom Media Size Configuration | Media Saving by Auto Rotation | Advanced Colour Mode Image Type Selection | Dither Pattern Control for B&W Lines vs Aerial | KIP Accounting Center Integration | KIP Cost Center Integration



Supported Versions

AutoCAD® 2013 and Newer Supported | 32 & 64 Bit Operating System Compatibility



Media Information

Real-Time Media Size and Quantity | Custom Page Size Configuration | Media Saving Auto Rotation | Include Pen and Media Information in File | Automatic Roll Selection



Colour Controls

Simple Colour Adjustments | Simple Colour Image Type Selection | Apply Colour Filter | Colour and Black Trapping Controls



B&W Image Controls

Vector Graphics Dither | Vector Line Dither Mode | Raster Graphic Photo Mode | Line Width Compensation | Raster Image Gamma and Density Controls



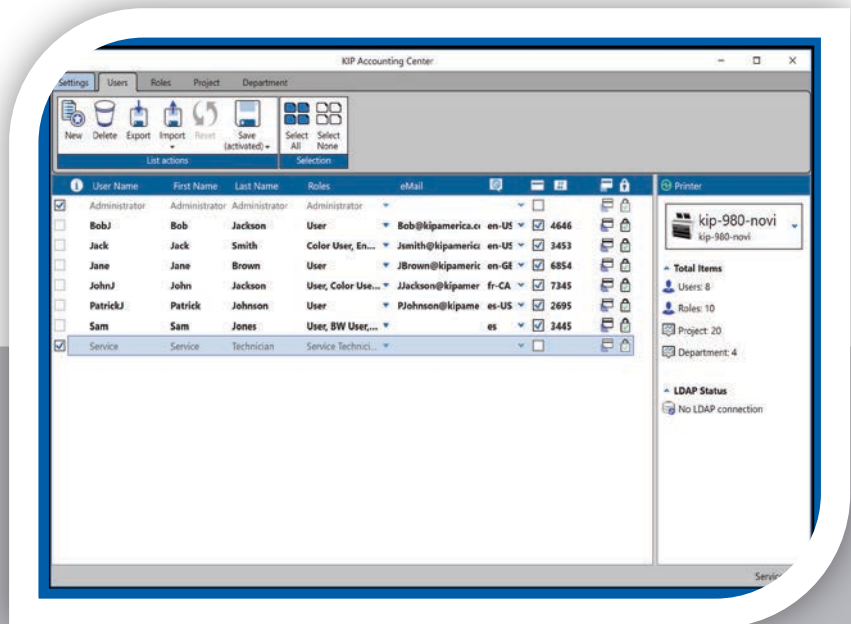
Special Features

HPGL Pen User Preset Selection | Select Fold Pattern | Select Exit Tray Location | Select Text and/or Graphic Stamp | Dedicated AutoCAD® HDI Driver | HPGL/2 – RTL File Data | KIP Secure Print | Job Accounting - User Tracking | Job Accounting – Two Customisable Fields

Accounting / Administrative

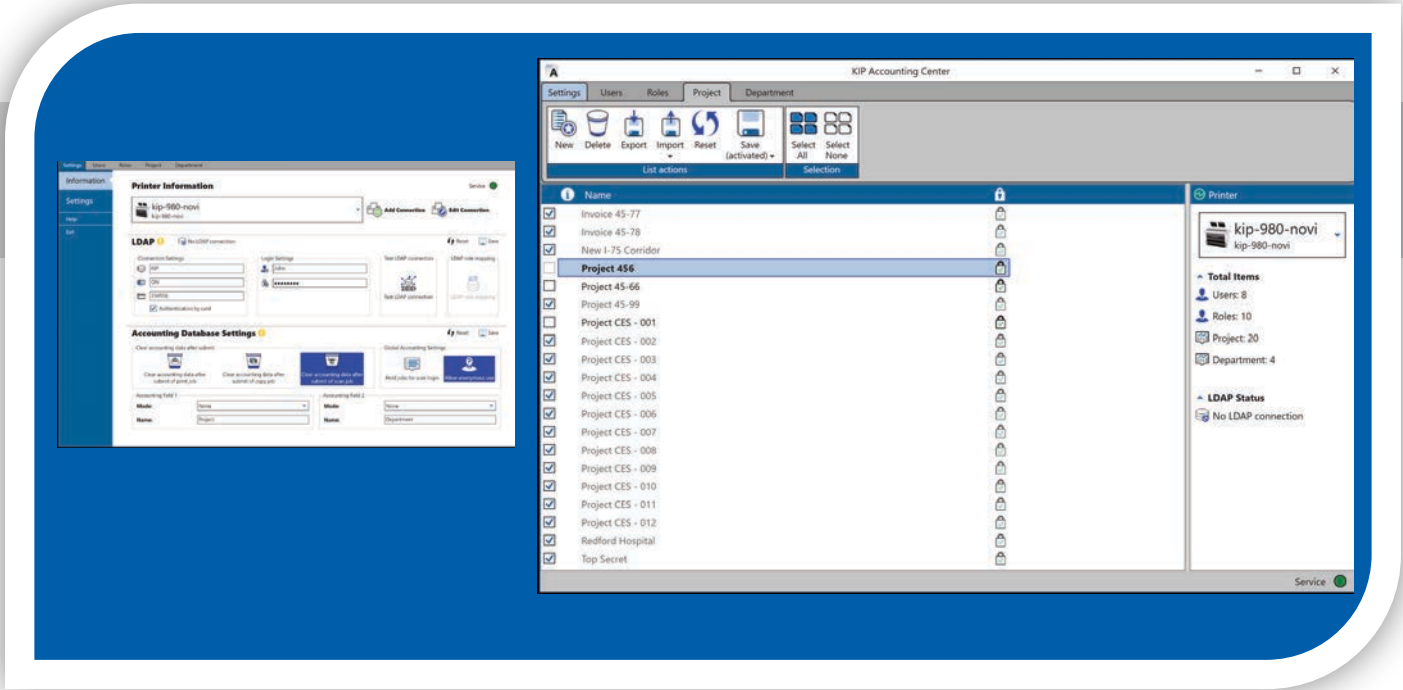
KIP Accounting Center

The KIP Accounting Center consolidates control of user account data and printing rules for all Copy, Print and Scan activities for KIP colour and b&w systems. When activated, the KIP Touchscreen systems, printing applications and print drivers continuously retrieve accounting and user data from the System K controller. Utilising rules based printing and account data, administrators and IT managers can control print costs or turn printing into billing revenue. The account data is held on the KIP Printer system for use by the KIP Cost Center software application.



Integrated with all KIP Applications





KIP Accounting Center Settings

Adding Project Numbers

KIP Accounting Center Features



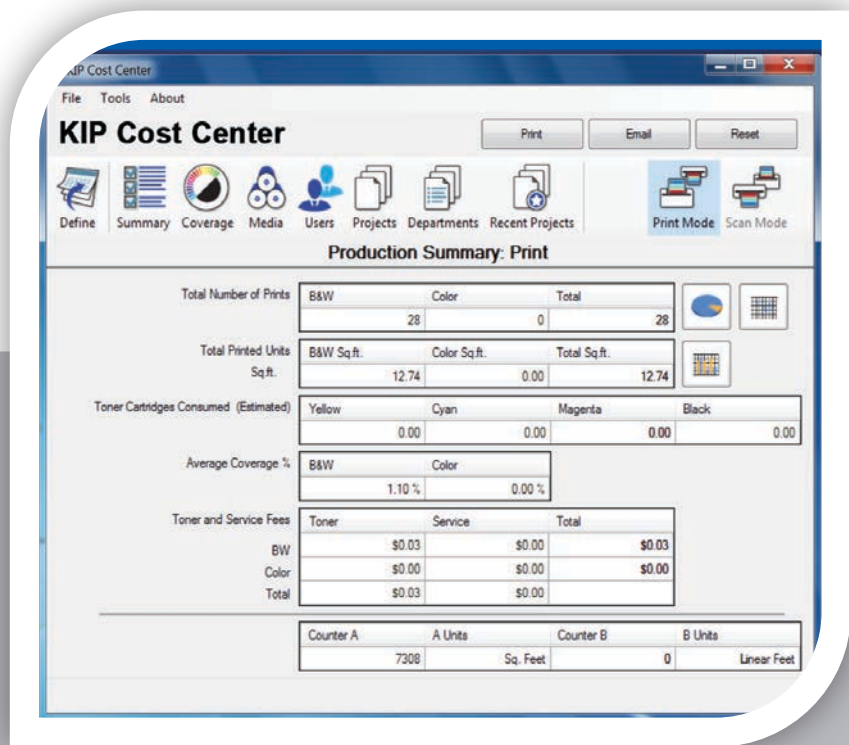
Username and Two Customisable Fields | Import for User Data Using LDAP | Clear Fields After Each Job Submission | ASCII Import/Export | Easily Update User, Project and Department Data | Automated KIP System Update via Scripting | Password Protect any or all Data Entries | No Special Data Servers Required



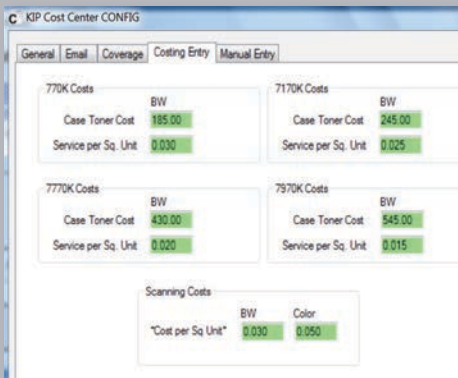
Accounting / Administrative

KIP Cost Center

The KIP Cost Center application retrieves extensive log files directly from KIP Systems and automatically generates production reports for user, project and department level accounting data. Print or Email visually attractive graphical reports for colour and b&w print and scan production directly from the application. Generate reports anytime and anywhere when KIP Systems are configured to automatically Email tracking data at pre-determined intervals.



Print Summary Reports



Cost Entry for Printing and Scanning

Tools About

KIP Cost Center

Print Email Reset

Define Summary Coverage Media Users Projects Departments Recent Projects Print Mode Scan Mode

Details by Project: Print

Project Search

Project	BW			Color			Total		
	Pages	Sq.ft.	Fees	Pages	Sq.ft.	Fees	Pages	Sq.ft.	Fees
JAMES	16	5.95	\$0.000	0	0.00	\$0.000	16	5.95	\$0.000
BOB	4	2.23	\$0.000	0	0.00	\$0.000	4	2.23	\$0.000
JOHN	8	1.49	\$0.000	0	0.00	\$0.000	8	1.49	\$0.000
	1	0.13	\$0.000	0	0.00	\$0.000	1	0.13	\$0.000

KIP Cost Center Print Details by Project

KIP Cost Center Features



Integrated with all KIP Apps and Touchscreen Systems | Track Colour and B&W Copy, Scan and Print | Easy to Understand Graphical Reports | Average Toner Coverage by Percent | Daily Print and Scan Volume for Colour and B&W | Reports by Date Range | Print Reports on Demand | Receive Reports by Email | User, Project and Department Categories | Access the Details of the Last 100 Jobs | KIP Toner Costs by Colour and B&W | KIP Maintenance Costs | KIP Scanner Costs by Colour and B&W



Report Categories

Print Coverage Tracked in 10 Categories | Reports Available in Data and Graphic Format | Print Reports on Demand | Receive Reports via Email | User Report – Graph for Top 5 | Project Number Report – Graph for Top 5 | Department Report – Graph for Top 5 | Search Function



Reports by Date Range

Print Volume – Total Number and Total Sq. Ft. / Sq. M. | Scan Volume – Total Number and Total Sq. Ft. / Sq. M. | Toner Costs | Maintenance Costs | Total Cost of Operation | Estimated Toner Cartridges Used (CMYK) | Average Toner Coverage % by Colour and B&W Usage



Graphic Reports

Daily Print and Scan Volume Line Chart | Colour vs. B&W Scanning Bar or Pie Chart | Average % Coverage Report | Toner and Service Fees Generated | Total Number of Prints by Media Type | Total Sq. Ft. / Sq. M. by Media Type



Job History

Last 100 Jobs Information | Detailed Toner Coverage Per Page | Print Volume – Total Number of Prints | Print Volume – Total Sq. Ft. / Sq. M. | Maintenance Costs | Toner Costs by Colour and B&W

Accounting / Administrative

KIP Role Based Access Control

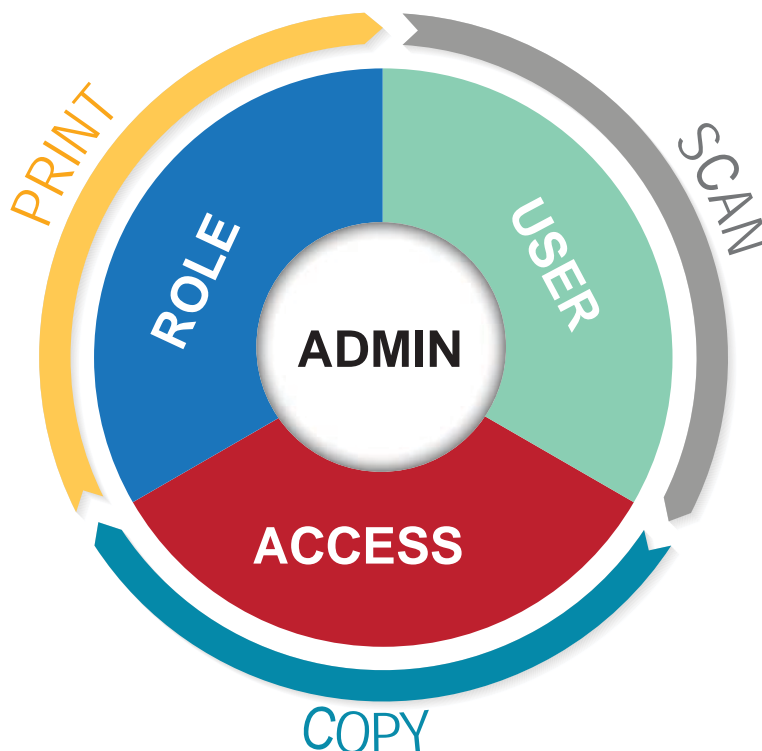
The Ultimate Print System Management Control

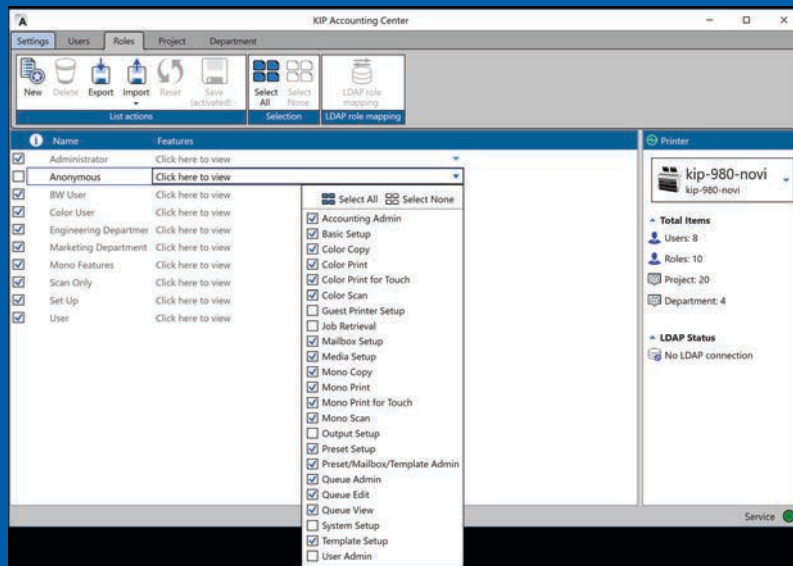
KIP System K Role Based Access Controls enables a new level of KIP print system management using rule based role assignment for advanced control. RBAC provides a smarter way to apply rules for specific user accessibility to copy, print and scan features assigned by the system administrator.

1. Easily create user accountability and conveniently communicate printing environment modifications.
2. Collect powerful data to effectively analyse print system behaviors to optimise rules for streamlining print environment efficiency and security.
3. Apply printing rules to create a smarter printing environment. Customise conditions to conserve energy and supplies (Example: set restrictions on colour printing for specific users).

KIP Accounting Center Role Based Access Control is integrated within the KIP Smart Multi-Touchscreen, KIP ImagePro and KIP PrintPro.NET. RBAC resides within the optional KIP Accounting Center software.

KIP RBAC controls device usage for individual personnel, modifies system behavior, enforces security optimises efficiency and reduces cost.





KIP Role Based Access Control

KIP Role Based Access Control Features



Create a smarter printing environment | Easily assign Roles for device functionality to individual users | Collect powerful data to effectively analyse print system usage | Optimise rules for streamlining print environment efficiency | Intelligent presets for intuitive productivity | Once Roles are created they can be exported to other System K printers | Effective management of company print system assets | Reduce printing cost | Enhance document security by limiting device access through convenient authorisation policies. Ensure only assigned users can access secure devices by requiring authorisation through optional smart cards, or alphanumeric personal pin identification codes or numbers (PIC, PIN)



Accounting Center with RBAC

KIP Accounting Center sets a new standard for powerful automated control of user account data, cost reporting for all copy, print and scan activities with role based printing rules | KIP Accounting Center includes KIP Cost Center and KIP Role Based Access Control | KIP Accounting is a comprehensive solution to turn printing into billing revenue | KIP Accounting generates professional user, project and department reports | KIP Cost Center tracks and reports the toner and service cost for colour and b&w copies, prints and scans | KIP Role Based Access Control easily implements device usage rules for individual personnel, modifies system behavior, enforces security optimises efficiency and reduces cost | Unlimited site license | Developed by KIP | Unmatched performance and value

Accounting / Administrative

KIP Card Reader Systems

Contactless Card Reader and DoD Compliant Common Access Card (CAC)

KIP offers customers two solutions to secure the KIP Systems using contactless card readers.

The KIP Contactless Card system integration enables control of walk-up copy, print and scan functions for work group systems with standard FeliCa Cards. With the touch of a card, unlock the touchscreen and recall User Preferences automatically. Track usage information for copy, print and scan functions based on Card ID. Walk away with your card and the system automatically resets for the next user.

The KIP Common Access Card Solution is a DoD authorised solution that uses a contactless card and in-line network appliance to access network resources. KIP's CAC Solution protects a network by requiring users to authenticate using a smartcard (CAC/PIV) and personal identification number (PIN). Without both the card and PIN, the KIP CAC does not permit the user to transmit scan data from the KIP device to network resources.



Contactless Card System



Common Access Card Solution

KIP Contactless Card System Integration Key Features



Standard FeliCa Cards | Various Contactless Cards | User Authentication Linked to Card | Load User and System Presets | Load User Cloud and SMB Credentials | Track Usage by Card/NFC Token | Release User Jobs at Touchscreen | KIP Accounting Center Integration | KIP Cost Center Integration

Connectivity

USB to KIP System K Controller

Administration

KIP Accounting Center Application for User Data | KIP PrintPro.net for Feature Settings

Supported Standards

Japan: No AC-12005 | USA: FCC ID AK8RCS380 | Canada: IC Certification No: 409B-RCS380 | Europe: CE R&TTE (1999/5/EC)

KIP Common Access Card Solution Key Features



Enables/Disables Network Access | Designed for Easy Installation | Meets Homeland Security Presidential Directive (HSPD-12) | Local and Network User Authentication Using LDAP or Active Directory | Netgard MFD In-Line Network Appliance

Connectivity

2x 10/100 Ethernet | Dual IPv4 and IPv6 Stacks

Administration/Management

Local: Manager Remote | Web: Browser via SSL

Supported Standards

ISO/IEC 7816 and 7810 | FIPS 140-2 and 201 | US (Dept of Defense) Common Access Card (CAC)

Physical Description & Operating Environment

10 Button PIN Pad | In-Line Netgard MFD Appliance | Size: 6.25 in. x 1.125 in. x 6.25 in. (15.9 cm x 2.5 cm x 15.9 cm) | Weight: 0.9 lb. (0.4 kg) | Power: Operating 100-240 V, 50/60 Hz Auto-Sensing Power Supply Input | Power Consumption: 0.6A | Temperature: 32°F – 122°F (0°C – 50°C)

Administrative

KIP Printer Status / SNMP

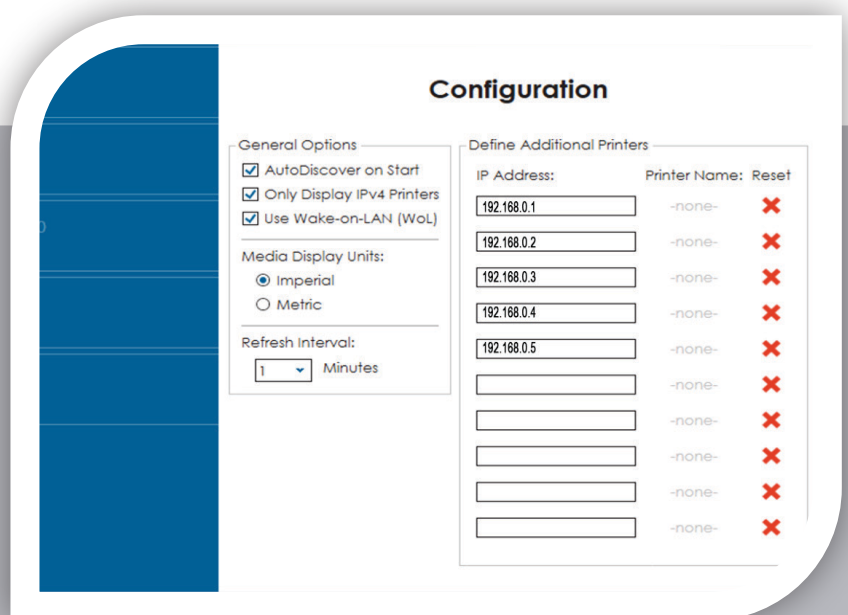
The KIP Printer Status application is the ideal solution for providing centralised status updates and information to administrators and users over a local or Wide Area Network. The app provides immediate access to view and manage the current status of all colour and b&w KIP systems on the network via a single, convenient user interface. Using standard SNMP protocol, the KIP Printer Status application will automatically detect the available KIP printers and provide valuable information such as media levels, toner status and meter readings.

KIP Printer E-Notifications

In conjunction with the KIP Printer Status application, each KIP is capable of sending detailed E-Notifications. Users receive Email confirmations that their job has reached the print queue and has completed printing; ready for pickup. If a system interruption occurs such as out of toner or paper, a detailed Email will immediately notify personnel. The System K controller automates the meter reading process by transmitting meter data via Email on a weekly or monthly basis. The KIP Cost Center software can interpret the meter information and provide reports for print and scan production for both colour and b&w documents.



Visual Notification for Machine Status



KIP Printer Status Configuration

Printer Status

KIP-980-NOVI
Ready
Job #01 - ENG E - 34x44 (0 / 5) Rippling

MEDIA

- 30" Bond
- 17" Bond
- 36" Bond
- 36" Bond

TONER

- 100% Black
- 100% Cyan
- 100% Magenta
- 100% Yellow

COUNTERS

- Counter A : 188611 1 Square Feet (Color)
- Counter B : 28300 1 Square Feet (Black)
- Counter C : 145 1 Square Feet (Cyan)
- Total Run : 24051 1 Linear Meters

PENDING JOBS

Job #	Job Name	Pages	Size	Color	Time
001	Job #01 - ENG E - 34x44	5	34x44	Color	00:00

KIP Printer Status Printer Details

KIP Printer Status / SNMP Key Features



SNMP Communication to KIP Printer | PC Based Windows® Application | 32 and 64 Bit Operating Systems | Monitor Status of KIP Printers | Auto Detect KIP Printer (LAN) | Add up to 10 Printers by IP Address (LAN or WAN) | Visual Notification for Machine Status | View all KIP Printers on a Single Screen | Quick Access to Print Queue via PrintPro.net Link | Automated Meter Read



Machine Status

Blinking Attention Indicator | Online or Offline | Open Covers | Mis-Feeds | Current Print Meter



Printer Notifications by Email

Job Received | Job Complete | Printer Out of Toner | Printer Mis-Feed | Printer Out of Paper | Job Requires Attention | Set Date and Time for Automated Meter Read | Meter Data for Use with KIP Cost Center | Current Job Status | Pending Job List



Meter Information

Counter A – Square Feet / Meters | Counter B – Linear Feet / Meters | Total Run – Lifetime Meter Count | B&W and Colour Meter Count

Accounting / Administrative

KIP Data Security Features

At KIP, security is paramount. As a world leader in the development of digital wide format production technology, KIP is committed to keeping digital information safe and secure. Customers and potential customers can look to KIP as a trusted provider of secure solutions with many standard and optional security features.

Based on Department of Defense NISPOM specifications, the Image Overwrite security feature electronically shreds information stored on the hard disk as part of routine job processing.

Job Accounting and Data Tracking ensures that only properly authorised users are permitted to use a KIP device. Two additional fields, displayed in each KIP application can enforce tracking by Project or Department Number. These standard features feed the KIP Cost Center to generate production reports based on User, Project or Department usage.

Eliminate the risk of unauthorised access with the optional Removable Hard Disk Drive kit. The removable hard drive can be disconnected when the device is unattended. Multiple disk drives can be implemented allowing secure device sharing between different workgroups or departments. This option is frequently required by the US Government for management of classified information and highly recommended for commercial customers who print data that is subject to legal regulations including HIPAA, SOX and PCI.

The System K controller is designed and constructed to utilise standard open architecture PC components. KIP printing speeds and unique image processes are supported by the KIP System K Controller with Microsoft® IoT Enterprise embedded operating system. The Microsoft® partnership with KIP ensures an industry standard that provides excellent reliability.





KIP Data Security Key Features



Image Overwrite | Removable Hard Disk Drive Accessory Kit | KIP System K Controller with Microsoft® IoT Enterprise Embedded Operating System | Standard Security Updates | Data Encryption and Virus Scanning Applications | KIP Secure Print | KIP Accounting Center Integration | KIP Cost Center Integration



Image Overwrite

Electronically Shreds Copy, Print and Scan Data | Standard Feature | Automatic Deletion | 3 – Pass Erasure Algorithm | Configured via Printpro.net | Based on NISPOM 5220.22-M Requirements



Removable Hard Disk Drive Kit

Share KIP Device between Secure Workgroups and Departments | Remove External Hard Disk Drive as Required | Additional Disk Drives Available | Management of Classified or Legally Restricted Data | Separate Usage for Confidential and Non-Confidential Work



Job Accounting and Data Tracking

Access Control | User Authentication | Project Number Authentication | Scan/Print Authentication at Touchscreen | Scan/Print Authentication in KIP Software Apps | KIP Accounting Center Integration | KIP Cost Center Integration



Windows® Operating System

Microsoft® Windows Embedded Partner | Accepted by IT Managers | Start Up and Shut Down Quickly | Improved Memory Utilisation | Accepts Automatic Updates | Configure Microsoft® Management Console to Update via WSUS



Data Encryption and Virus Scanning

Data Encryption via SSL and IP Security (IPSec) | Major Brands Tested | Accepts Virus Definition Updates



KIP Secure Print

Confidential Printing | Unique 4 Digit Security PIN | Jobs Print when Released by User | Reduce Waste – No Uncollected Jobs | Standard Feature in all KIP Software Apps | Secure PIN from Smart Print via Email



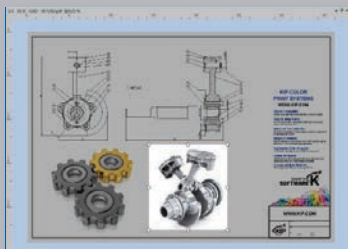
KIP 720 / 2300 Stand Alone Scan Station

KIP ImagePro – Scan & Copy

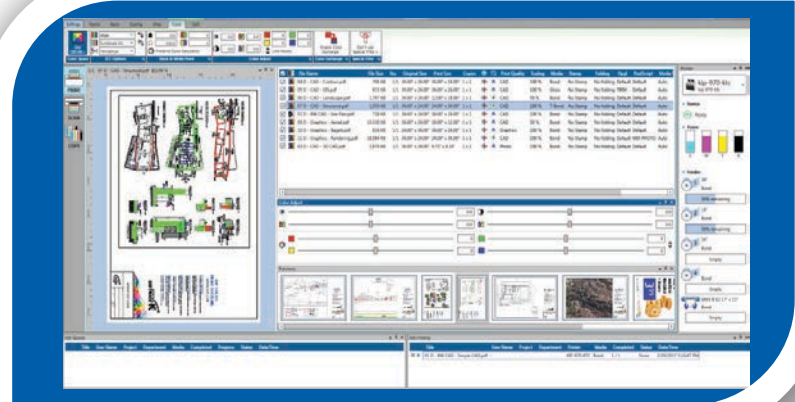
KIP ImagePro – Scan & Copy software is the professional's choice for wide format production Scan & Copy providing a complete set of features for high resolution colour and B&W copying & scan-to-file applications. For exclusive use with the KIP 720 and KIP 2300 scanners.

KIP ImagePro tools are designed to enhance colour management capabilities. KIP ImagePro offers extensive features for increased productivity including image quality adjustments, high definition viewer with advanced Area of Interest functions, auto document width detection along with Auto Start for stream feeding originals, scan to local drives, LAN locations, USB and cloud storage.

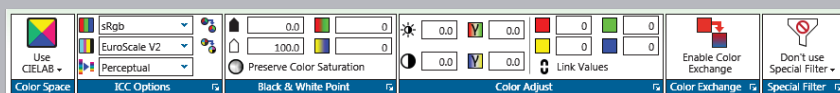
Simplify document quality when scanning or copying difficult originals by selecting b&w point settings on-the-fly adjustments to quickly snap text to solid black or to clean up background. Deskew documents automatically. Sophisticated project details can be highlighted with Advanced Area of Interest selections. KIP Smart Stack simplifies the accurate collation of mixed sets of colour and black and whites prints. The professional colour editor included with KIP ImagePro offers a high definition colour editor with real time colour correction viewing. Create impressive vibrant colour impact for posters, banners, point of purchase, business communications, safety, and technical images. Streamline colour correction with colour exchange selections from a choice of multiple colour spaces for optimal results.



Area of Interest (AOI)



Matrix Scan & Copy with HD Viewer, "Pop out" Panels & Device Status



Professional Colour Management

KIP ImagePro Key Features



Auto Start for Stream Feed Productivity | Auto Width Detection | Auto Deskew | Auto Increment of File Name | Advanced Area of Interest Selection | Professional Colour Editor & Correction Features | KIP Smart Stacking | High Definition Viewing | Customisable Interface for Personalised View

KIP ImagePro – Scan & Copy Feature Descriptions



File Renaming Mode

Rapidly rename hundreds of files with KIP's file renaming tool. Batch scan using production file naming conventions and rename the files post scanning. Use KIP's HD Viewer to zoom in and lock onto the title block area. Enter a new name and press enter to auto zoom to the same location on the next file.



Image Navigator

Within the KIP High Definition viewer, quickly navigate long length images or jump to any position with the Image Navigator. The repositionable thumbnail displays the current location on the zoomed in image. Set the location of the thumbnail view in any of the four corners. Select any new location or drag the Navigator box to change locations.



Stream Feeding Productivity

Auto Start for continuous original document feeding for maximum productivity | Auto De-skew | Auto Width Detection | Auto File Name Increment | Auto Length Detection | Live Preview



Advanced Area of Interest

Select Size | Position | Save only the "area of interest" to enhance communication of sophisticated or important details



Professional Colour Editor & Correction Features

High definition colour editor with real time colour correction viewing to create impressive vibrant colour impact for posters, banners, point of purchase, business communications, safety, and technical images. Streamlines colour correction with colour exchange selections from a choice of multiple colour spaces for optimal results.



High Definition Viewing

High resolution image pre-flight viewer to include review of colour adjustments and preset creations | Colour or B&W | AOI Selection - Scale, Position, Print | Page ruler | View Scale to Pixels or In-Screen



Customisable Interface for Personalised View

Access your preferred productivity features with ease using "Pop Out" tools and panels



Scan Mode

B&W, Grayscale & Colour Scan to File | Scan to Local Drive, USB, LAN or Cloud locations | Wide Variety of File Formats | Scan to Multi-Page PDF and TIF | Set Image Compression | Utilise Templates | Embed Stamps | Control Margins | Mirror and Rotation



Copy Mode

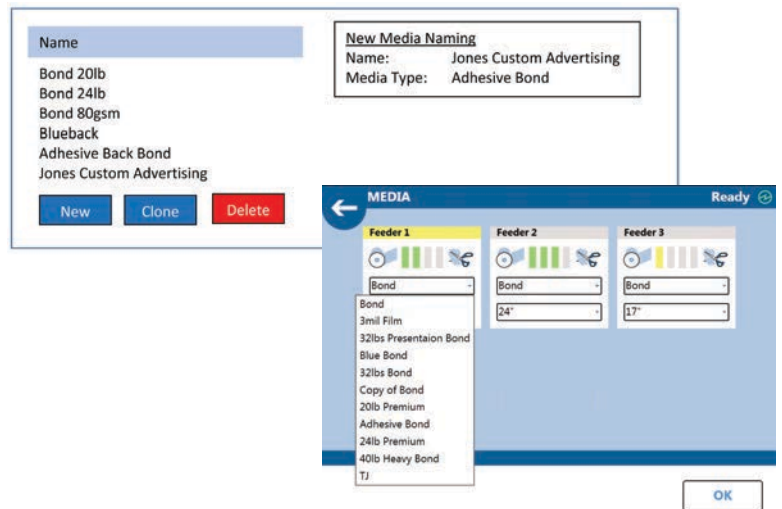
Copy to KIP System K B&W and Colour Systems | B&W, Grayscale and Colour Adjustments | Save Unlimited Presets and Template | Secure Printing | Use Set Separation pages | KIP Accounting Integration | KIP Cost Center Integration

Print Management Solutions

KIP Custom Media Manager

The KIP Custom Media Manager is a graphic user interface that allows the operator to identify and customise names to a wide range of media types and the KIP System's specifications.

- Integrated with KIP Colour and B&W Systems
- Automatically Adjust Systems Parameters
- Descriptive Media Categories



WWW.KIP.COM

KIP is a registered trademark of the KIP Group. All other product names mentioned herein are trademarks of their respective companies.
All product features and specifications are subject to change without notice. Complete product specifications are available at www.kip.com. © 2022

V04/12/22_EU